

The commitment of Cyril Ramaphosa Education Trust to our youth pays off

They are on the frontlines of the response to Covid-19.



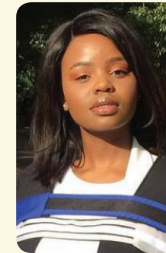
Name: Armandt Jacobs
Qualification: BEng Metallurgical engineering
Year: 2019, University of Pretoria
Job: Process Engineer

“During a crisis that poses an unprecedented threat to the whole of mankind, it is an absolute honour to be part of the workforce that helps power this country.”



Name: Palesa Futshane
Qualification: MBChB
Year: 2019, Walter Sisulu University
Job: Doctor

“I believe we have been given an opportunity to live the Hippocratic Oath to its fullest like never before.”



Name: Dineo Nono
Qualification: BSc Biological Sciences; BHSc Experimental Physiology (Hons); Post Graduate Diploma in Management.
Year: 2016, 2017, 2018, University of the Witwatersrand.
Job: Quality Improvement Facilitator

“As an essential services workforce, there has never been a better time to fully dedicate ourselves to our jobs, to fulfil our duties to the best of our capabilities and to serve the people tirelessly.”



Name: Sazi Zwakele Nzama
Qualification: MBChB
Year: 2017, University of KwaZulu Natal
Job: Doctor

“It's extremely humbling to see the support and acknowledgement of our service from the general public.”



Name: Lindokuhle Dladla
Qualifications: Diploma in Nursing (General, Psychiatric, Community Health and Midwifery Nursing Science)
Year: 2019, Chris Hani Baragwanath Nursing College
Job: Nurse

“It is a badge of honour to be a frontliner in the fight against this pandemic.”



Name: Themba Maluleke
Qualification: MbChB. FCP(SA). Certification in Cardiology.
Year: 2000, UCT; Fellowship of the College of Physicians, 2013; University of the Witwatersrand, 2016.
Job: Cardiologist

“At the end we should emerge victorious as a united nation and use it as a kick start to set our country on a mission of achieving both socioeconomic inclusivity and better and equitable health for all.”

Cyril Ramaphosa Education Trust (CRET) is a partner entity of Cyril Ramaphosa Foundation.

CRET partners with corporate sponsors and individuals to implement a holistic bursary support model for tertiary study. It includes mentoring, soft skills development, psychosocial support and internship and work experience opportunities. CRET encourages the ethos of “giving back” and develops committed civic-minded students.

Commit to our future. Commit to our youth.

Commit to an inclusive and empowered society, and a safer world for all.

Cyril Ramaphosa
 FOUNDATION

